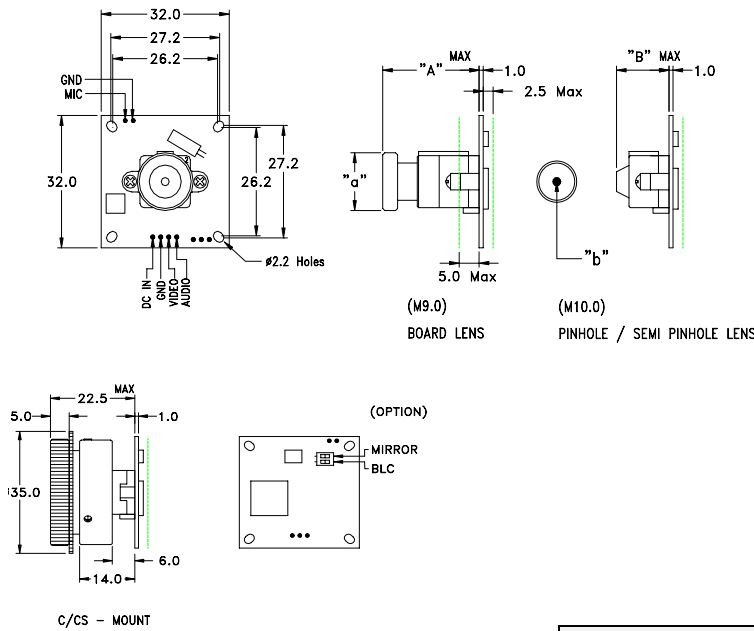


DIMENSION



BOARD LENS

LENS (mm)	"A"	φ"a"	Diagonal
2.9	25.0	φ14.0	120°
3.6	25.0	φ14.0	92.7°
4.3	21.0	φ15.0	78°
6.0	24.0	φ15.0	54°
12.0	22.0	φ14.0	25.7°

PINHOLE (P) / SEMI PINHOLE LENS (S)

LENS (mm)	"B"	φ"b"	Diagonal
(P) 3.2	10.5	φ0.9	117°
(P) 3.7	14.0	φ0.9	90°
(P) 5.5	14.0	φ5.0	60°
(S) 3.7	14.0	φ1.6	90°
(S) 4.36	14.0	φ1.6	73°
(S) 5.6	14.0	φ5.0	60°

SPECIFICATION

Reliability - With the use of high quality parts and durable CCD, a long trouble-free operation of the camera is assured.

Shock Resistant - High quality PCB with the new high tech surface mounting technology insures resistance from shock as well as vibration.

Easily mounted - The module comes equipped with mounting holes on the PCB allowing easy mounting to any type of casing. One-piece real compact board with flexibility can be fit any casing.

Power Supply - simple four-hole connector for POWER, GND, VIDEO, AUDIO.

Auto White Balance - White Balance realizes true color reproduction against various light sources.

DIP Switch Control - Various function in accordance with user's demands. [option]

- Mirror Mode on/off.
- Backlight compensation on/off.

Wide voltage input operation
- It allows wide range of voltage input upon various needs on operating circumstances. (8V~18V)

Audio Amp - The camera has Microphone and audio amplifier. [option]

Horizontal resolution	330 TV lines
Pick-up device	1/3" Interline CCD
Scanning System	525 lines interlaced (NTSC) 625 lines interlaced (PAL)
Synchronization	Internal
Output signal	Standard composite signal 1 Vpp composite video into 75 Ohms.
Light sensitivity	0.6 Lux F1.2 Lens [30IRE] -30 IRE
Electronics Iris	1/60~1/100,000 (NTSC) 1/50~1/100,000 (PAL)
Signal to Noise Ratio	45 dB or more (AGC off)
Gamma	0.45
AGC	ON
Input voltage	DC +12V [8.0 to 18.0V]
Power Consumption	0.6W or less
Ambient Temperature	-10 ° to +55 ° C -In storage -20 ° to +70 ° C
Relative humidity	Under 90% Non-condensing Under 95% Non-condensing
Weight	12.0 grams